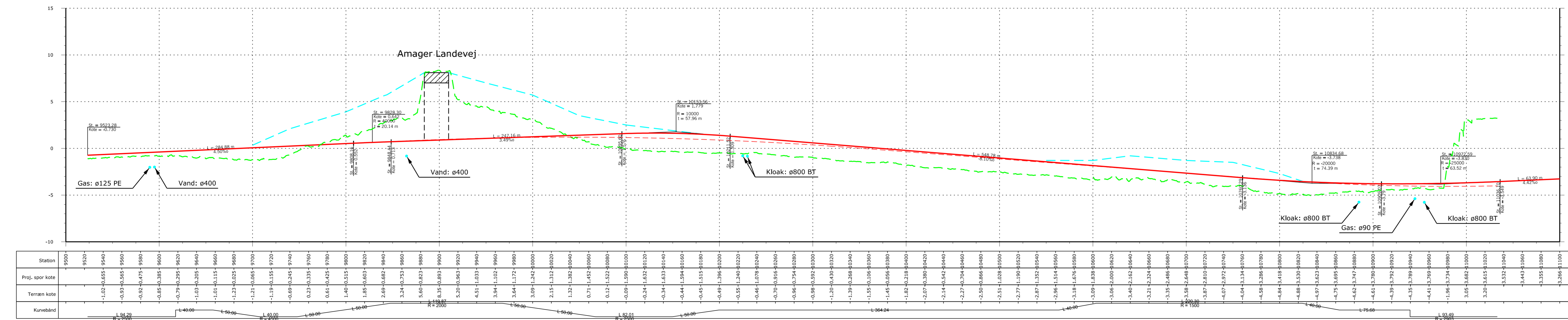


Plan, 1:2000



Længdeprofil, 1:2000/1:2000

Station	9500	9520	9540	9560	9580	9600	9620	9640	9660	9680	9700	9720	9740	9760	9780	9800	9820	9840	9860	9880	9900	9920	9940	9960	9980	10000	10020	10040	10060	10080	10100	10120	10140	10160	10180	10200	10220	10240	10260	10280	10300	10320	10340	10360	10380	10400	10420	10440	10460	10480	10500	10520	10540	10560	10580	10600	10620	10640	10660	10680	10700	10720	10740	10760	10780	10800	10820	10840	10860	10880	10900	10920	10940	10960	10980	11000																																																																																																																																																																																																																																																																																																																																																																																																																																																																																																																																																																																																																																																																																																																																																																																																																																																																																																																																																			
Proj. spor kote	-1.02	-0.955	-0.89	-0.825	-0.76	-0.695	-0.63	-0.565	-0.5	-0.435	-0.37	-0.305	-0.24	-0.175	-0.11	-0.045	0.02	0.085	0.15	0.215	0.28	0.345	0.41	0.475	0.54	0.605	0.67	0.735	0.8	0.865	0.93	0.995	1.06	1.125	1.19	1.255	1.32	1.385	1.45	1.515	1.58	1.645	1.71	1.775	1.84	1.905	1.97	2.035	2.1	2.165	2.23	2.295	2.36	2.425	2.49	2.555	2.62	2.685	2.75	2.815	2.88	2.945	3.01	3.075	3.14	3.205	3.27	3.335	3.4	3.465	3.53	3.595	3.66	3.725	3.79	3.855	3.92	3.985	4.05	4.115	4.18	4.245	4.31	4.375	4.44	4.505	4.57	4.635	4.7	4.765	4.83	4.895	4.96	5.025	5.09	5.155	5.22	5.285	5.35	5.415	5.48	5.545	5.61	5.675	5.74	5.805	5.87	5.935	6.0	6.065	6.13	6.195	6.26	6.325	6.39	6.455	6.52	6.585	6.65	6.715	6.78	6.845	6.91	6.975	7.04	7.105	7.17	7.235	7.3	7.365	7.43	7.495	7.56	7.625	7.69	7.755	7.82	7.885	7.95	8.015	8.08	8.145	8.21	8.275	8.34	8.405	8.47	8.535	8.6	8.665	8.73	8.795	8.86	8.925	8.99	9.055	9.12	9.185	9.25	9.315	9.38	9.445	9.51	9.575	9.64	9.705	9.77	9.835	9.9	9.965	10.03	10.1	10.165	10.23	10.295	10.36	10.425	10.49	10.555	10.62	10.685	10.75	10.815	10.88	10.945	11.01	11.075	11.14	11.205	11.27	11.335	11.4	11.465	11.53	11.595	11.66	11.725	11.79	11.855	11.92	11.985	12.05	12.115	12.18	12.245	12.31	12.375	12.44	12.505	12.57	12.635	12.7	12.765	12.83	12.895	12.96	13.025	13.09	13.155	13.22	13.285	13.35	13.415	13.48	13.545	13.61	13.675	13.74	13.805	13.87	13.935	14.0	14.065	14.13	14.195	14.26	14.325	14.39	14.455	14.52	14.585	14.65	14.715	14.78	14.845	14.91	14.975	15.04	15.105	15.17	15.235	15.3	15.365	15.43	15.495	15.56	15.625	15.69	15.755	15.82	15.885	15.95	16.015	16.08	16.145	16.21	16.275	16.34	16.405	16.47	16.535	16.6	16.665	16.73	16.795	16.86	16.925	16.99	17.055	17.12	17.185	17.25	17.315	17.38	17.445	17.51	17.575	17.64	17.705	17.77	17.835	17.9	17.965	18.03	18.1	18.165	18.23	18.295	18.36	18.425	18.49	18.555	18.62	18.685	18.75	18.815	18.88	18.945	19.01	19.075	19.14	19.205	19.27	19.335	19.4	19.465	19.53	19.595	19.66	19.725	19.79	19.855	19.92	19.985	20.05	20.115	20.18	20.245	20.31	20.375	20.44	20.505	20.57	20.635	20.7	20.765	20.83	20.895	20.96	21.025	21.09	21.155	21.22	21.285	21.35	21.415	21.48	21.545	21.61	21.675	21.74	21.805	21.87	21.935	22.0	22.065	22.13	22.195	22.26	22.325	22.39	22.455	22.52	22.585	22.65	22.715	22.78	22.845	22.91	22.975	23.04	23.105	23.17	23.235	23.3	23.365	23.43	23.495	23.56	23.625	23.69	23.755	23.82	23.885	23.95	24.015	24.08	24.145	24.21	24.275	24.34	24.405	24.47	24.535	24.6	24.665	24.73	24.795	24.86	24.925	24.99	25.055	25.12	25.185	25.25	25.315	25.38	25.445	25.51	25.575	25.64	25.705	25.77	25.835	25.9	25.965	26.03	26.1	26.165	26.23	26.295	26.36	26.425	26.49	26.555	26.62	26.685	26.75	26.815	26.88	26.945	27.01	27.075	27.14	27.205	27.27	27.335	27.4	27.465	27.53	27.595	27.66	27.725	27.79	27.855	27.92	27.985	28.05	28.115	28.18	28.245	28.31	28.375	28.44	28.505	28.57	28.635	28.7	28.765	28.83	28.895	28.96	29.025	29.09	29.155	29.22	29.285	29.35	29.415	29.48	29.545	29.61	29.675	29.74	29.805	29.87	29.935	30.0	30.065	30.13	30.195	30.26	30.325	30.39	30.455	30.52	30.585	30.65	30.715	30.78	30.845	30.91	30.975	31.04	31.105	31.17	31.235	31.3	31.365	31.43	31.495	31.56	31.625	31.69	31.755	31.82	31.885	31.95	32.015	32.08	32.145	32.21	32.275	32.34	32.405	32.47	32.535	32.6	32.665	32.73	32.795	32.86	32.925	32.99	33.055	33.12	33.185	33.25	33.315	33.38	33.445	33.51	33.575	33.64	33.705	33.77	33.835	33.9	33.965	34.03	34.1	34.165	34.23	34.295	34.36	34.425	34.49	34.555	34.62	34.685	34.75	34.815	34.88	34.945	35.01	35.075	35.14	35.205	35.27	35.335	35.4	35.465	35.53	35.595	35.66	35.725	35.79	35.855	35.92	35.985	36.05	36.115	36.18	36.245	36.31	36.375	36.44	36.505	36.57	36.635	36.7	36.765	36.83	36.895	36.96	37.025	37.09	37.155	37.22	37.285	37.35	37.415	37.48	37.545	37.61	37.675	37.74	37.805	37.87	37.935	38.0	38.065	38.13	38.195	38.26	38.325	38.39	38.455	38.52	38.585	38.65	38.715	38.78	38.845	38.91	38.975	39.04	39.105	39.17	39.235	39.3	39.365	39.43	39.495	39.56	39.625	39.69	39.755	39.82	39.885	39.95	40.015	40.08	40.145	40.21	40.275	40.34	40.405	40.47	40.535	40.6	40.665	40.73	40.795	40.86	40.925	40.99	41.055	41.12	41.185	41.25	41.315	41.38	41.445	41.51	41.575	41.64	41.705	41.77	41.835	41.9	41.965	42.03	42.1	42.165	42.23	42.295	42.36	42.425	42.49	42.555	42.62	42.685	42.75	42.815	42.88	42.945	43.01	43.075	43.14	43.205	43.27	43.335	43.4	43.465	43.53	43.595	43.66	43.725	43.79	43.855	43.92	43.985	44.05	44.115	44.18	44.245	44.31	44.375	44.44	44.505	44.57	44.635	44.7	44.765	44.83	44.895	44.96	45.025	45.09	45.155	45.22	45.285	45.35	45.415	45.48	45.545	45.61	45.675	45.74	45.805	45.87	45.935	46.0	46.065	46.13	46.195	46.26	46.325	46.39	46.455	46.52	46.585	46.65	46.715	46.78	46.845	46.91	46.975	47.04	47.105	47.17	47.235	47.3	47.365	47.43	47.495	47.56	47.625	47.69	47.755	47.82	47.885	47.95	48.015	48.08	48.145	48.21	48.275	48.34	48.405	48.47	48.535	48.6	48.665	48.73	48.795	48.86	48.925	48.99	49.055	49.12	49.185	49.25	49.315	49.38	49.445	49.51	49.575	49.64	49.705	49.77	49.835	49.9	49.965	50.03	50.1	50.165	50.23	50.295	50.36	50.425	50.49	50.555	50.62	50.685	50.75	50.815	50.88	50.945	51.01	51.075	51.14	51.205	51.27	51.335	51.4	51.465	51.53	51.595	51.66	51.725	51.79	51.855	51.92	51.985	52.05	52.115	52.18	52.245	52.31	52.375	52.44	52.505	52.57	52.635	52.7	52.765	52.83	52.895	52.96	53.025	53.09	53.155	53.22	53.285	53.35	53.415	53.48	53.545	53.61	53.675	53.74	53.805	53.87	53.935	54.0	54.065	54.13	54.195	54.26	54.325	54.39	54.455	54.52	54.585	54.65	54.715	54.78	54.845	54.91	54.975	55.04	55.105	55.17	55.235	55.3	55.365	55.43	55.495	55.56	55.625	55.69	55.755	55.82	55.885	55.95	56.015	56.08	56.145	56.21	56.275	56.34	56.405	56.47	56.535	56.6	56.665	56.73	56.795	56.86	56.925	56.99	57.055	57.12	57.185	57.25	57.315	57.38	57.445	57.51	57.575	57.64	57.705	57.77	57.835	57.9	57.965	58.03	58.1	58.165	58.23	58.295	58.36	58.425	58.49	58.555	58.62	58.685	58.75	58.815	58.88	58.945	59.01	59.075	59.14	59.205	59.27	59.335	59.4	59.465	59.53	59.595	59.66	59.725	59.79	59.855	59.92	59.985	60.05	60.115	60.18	60.245	60.31	60.375	60.44	60.505	60.57	60.635	60.7	60.765	60.83	60.895	60.96	61.025	61.09	61.155	61.22	61.285	61.35	61.415	61.48	61.545	61.61	61.675	61.74	61.805	61.87	61.935	62.0	62.065	62.13	62.195	62.26	62.325	62.39	62.455	62.52	62.585	62.65	62.715	62.78	62.845	62.91	62.975	63.04	63.105	63.17	63.235	63.3	63.36